

# AM I ELIGIBLE?

To be eligible for K-RAD, a caregiver must meet the following criteria:

- Be a family member or other informal caregiver, 18 years of age or older, providing care to an individual of any age living with Alzheimer's or other related dementia.
- The care recipient must have a probable diagnosis of Alzheimer's disease or a related dementia.
- The caregiver must live in Kansas in the same home as the care recipient (persons residing in a long-term care community are not eligible). In the case the caregiver does not live with the recipient, an exception may be requested through KDADS.



Scan the QR code for more information and a complete list of Frequently Asked Questions.



<https://kdads.ks.gov/services-programs/aging/kansas-caregivers>

## QUESTIONS?

Email

**[KDADS.Dementia@ks.gov](mailto:KDADS.Dementia@ks.gov)**

or call the ADRC

Statewide Call Center

**1-855-200-2372**

# Are you caring for a loved one with Alzheimer's or dementia?

## HELP IS AVAILABLE



The **Kansas Respite for Alzheimer's & Dementia Program (K-RAD)** is a resource for family caregivers who have limited access to respite care and/or other supports through current systems.

The purpose is to provide relief to unpaid caregivers of individuals with a probable diagnosis of Alzheimer's disease or related dementia.



# Frequently Asked Questions Regarding K-RAD

## What is the K-RAD Program?

The Kansas Respite for Alzheimer's & Dementia Program (K-RAD) is a resource for family caregivers who have limited access to respite care and/or other supports through current systems. The purpose is to provide relief to unpaid caregivers of individuals with a probable diagnosis of Alzheimer's disease or related dementia.

## What Defines Respite Care?

Services that offer temporary, substitute supports or living arrangements for care recipients to provide a brief period of relief or rest for caregivers. Respite care includes: in-home respite (personal care, homemaker, and other in-home respite); respite provided by attendance of the care recipient at a senior center or other nonresidential program; and institutional respite provided by placing the care recipient in an institutional setting such as a nursing home for a short period of time as a respite service to the caregiver.

## How Do I Apply for the K-RAD Program?

Caregivers may apply for K-RAD through their local Area Agency on Aging (AAA) - 1-855-200-2372. The AAA will send packet that includes 1) application and 2) medical certification that can be completed by the care recipient's treating MD (Medical Doctor), DO (Doctor of Osteopathy), NP (Nurse Practitioner), APN (Advanced

Practice Nurse), or PA (Physician Assistant). Completed application should be returned to your local AAA - 1-855-200-2372.

## How Much is the Respite Amount Through the K-RAD Program?

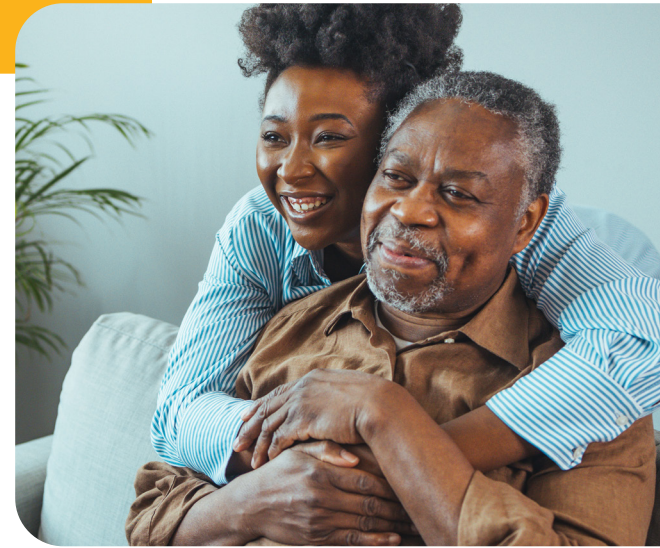
The program may subsidize the cost of services not to exceed an amount up to \$1,000 per year per care recipient. The K-RAD Program follows the State of Kansas fiscal calendar (July – June). Funds will be awarded on a first-come, first-served basis to those who qualify. You may re-apply for funds at the start of the new fiscal year. Funding is limited, and no awards are guaranteed.

## Do I Get \$1,000 Up Front to Spend?

No, the funds are paid to a respite provider or in some cases, caregivers may hire someone of their choice to provide care (care-directed option) and then reimbursed after you provide receipts for respite services.

## How Do I Know Who is a Covered Respite Provider?

The AAA will provide the caregiver with a list of approved providers. It is the responsibility of the caregiver to identify and locate service providers and/or community resources. The provider will invoice the AAA after respite services have been provided.



## Can Paid Caregivers Receive K-RAD?

No, caregivers must be an informal and unpaid provider of in-home care to their care recipients in order to be eligible for K-RAD.

## Do Caregivers Need to Live in Kansas to Receive K-RAD Funding?

Yes, the caregiver must reside in Kansas and with the care recipient who also resides in Kansas. In the case that the caregiver does not reside with the care recipient, an exception can be requested through KDADS at [KDADS.dementia@ks.gov](mailto:KDADS.dementia@ks.gov).

## Can I Apply if my Care Recipient Lives in Assisted Living, a Skilled Nursing Facility, or a Residential Care Facility?

No, the care recipient must live in their own home, with their caregiver, or an apartment.