



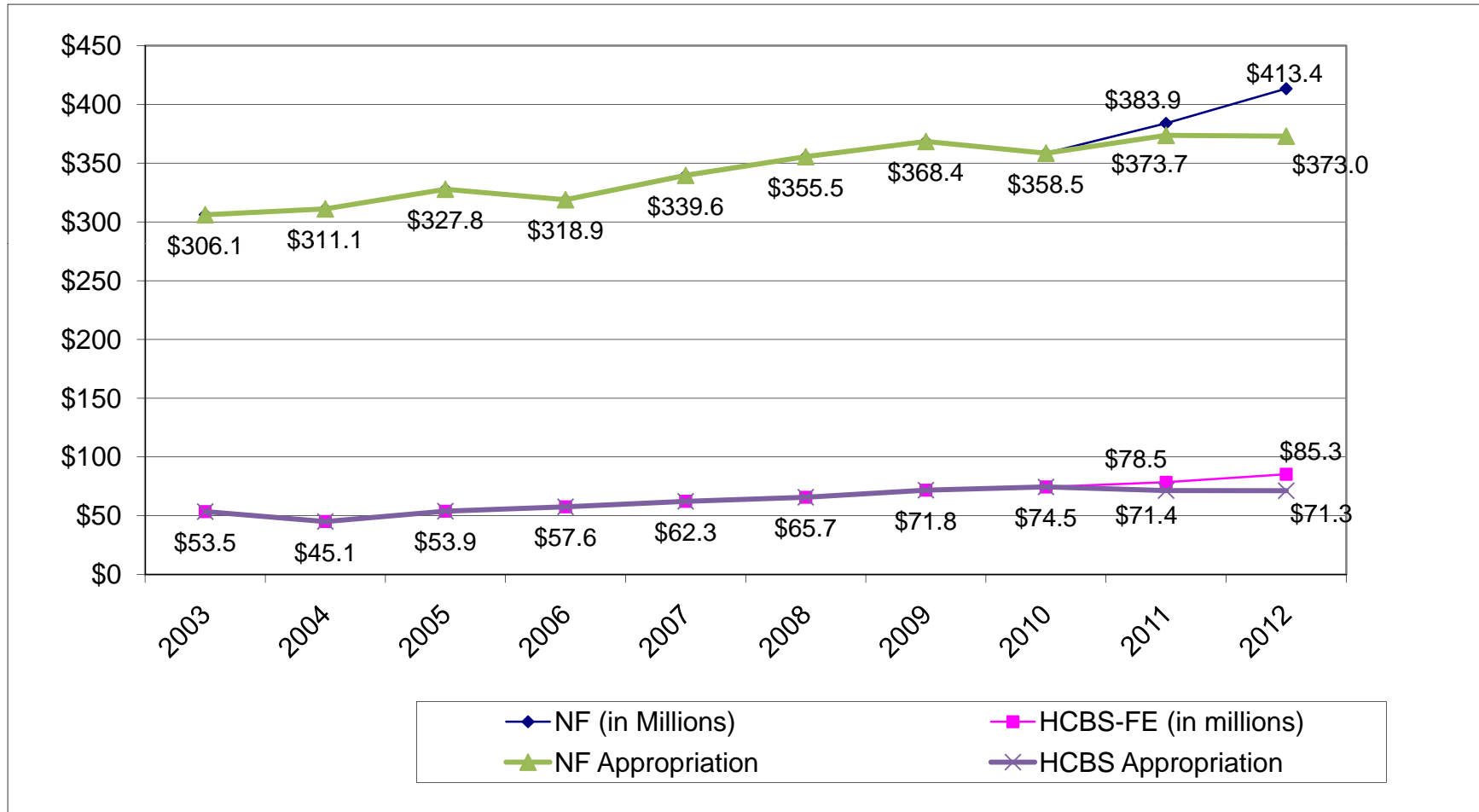
# Legislative Budget Committee

Aug. 27, 2010

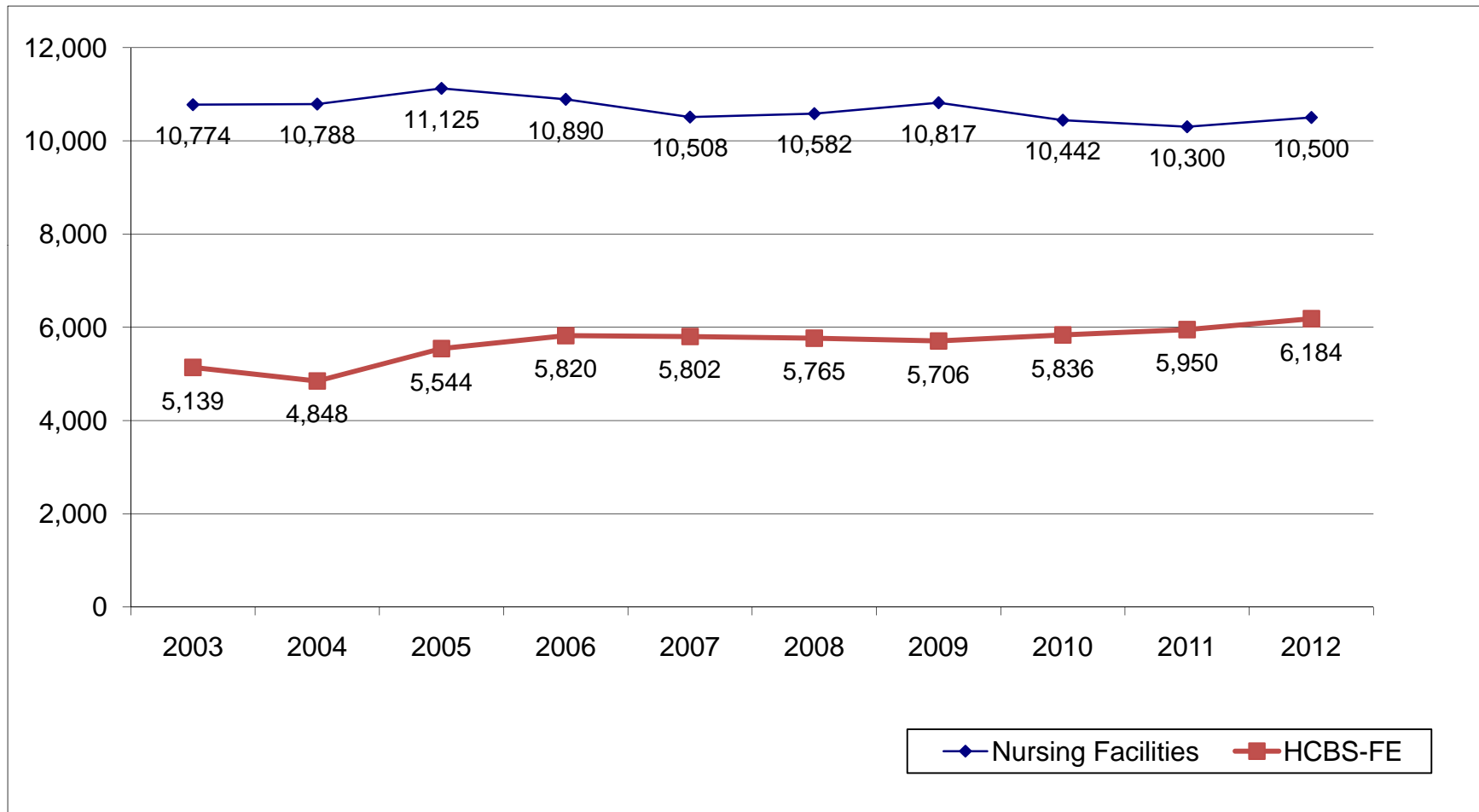
Update on  
Home and Community-Based Waivers:  
Frail Elderly

Martin Kennedy, Secretary

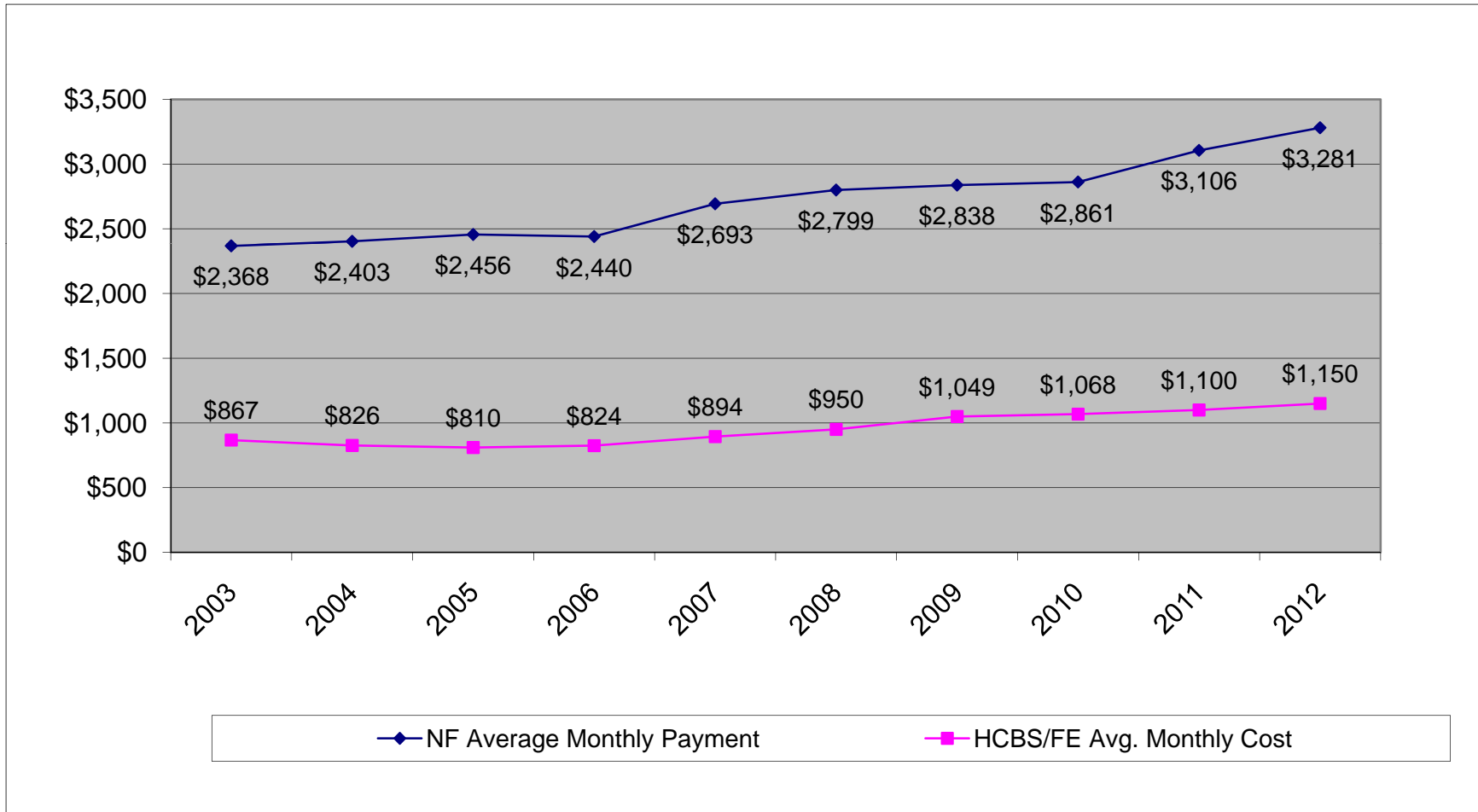
# Kansas Long Term Care Medicaid Expenditures (dollars in millions)



# Kansas Long Term Care Medicaid Average Caseload



# Kansas Long Term Care Medicaid Monthly Expenditure



## Discontinued HCBS-FE Service

| Service               | SGF                | All Funds          |
|-----------------------|--------------------|--------------------|
| Oral Health           | \$347,063          | \$974,076          |
| Sleep Cycle           | 663,325            | 1,871,704          |
| Comprehensive Support | 639,997            | 1,796,232          |
| Assisted Technology   | 265,079            | 743,976            |
| Telehealth            | 390,149            | 1,095,000          |
| <b>Total</b>          | <b>\$2,305,613</b> | <b>\$5,385,988</b> |