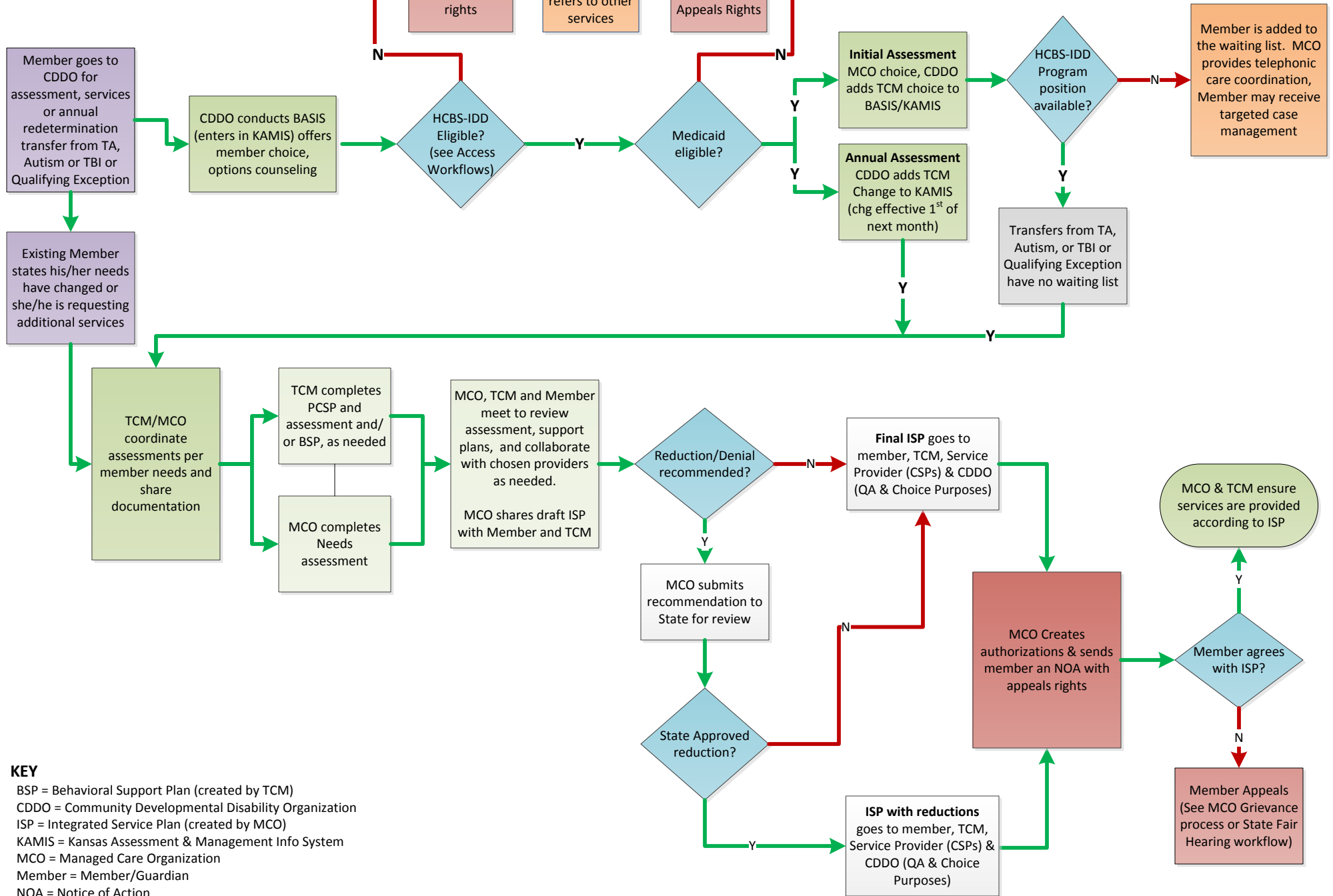


# End to End Access to DD Service Process

Last Updated: 12/31/13



## KEY

- BSP = Behavioral Support Plan (created by TCM)
- CDDO = Community Developmental Disability Organization
- ISP = Integrated Service Plan (created by MCO)
- KAMIS = Kansas Assessment & Management Info System
- MCO = Managed Care Organization
- Member = Member/Guardian
- NOA = Notice of Action
- PCSP = Person Centered Support Plan (created by TCM)
- TCM = Targeted Case Manager